



Network Critical
The Window to your Network™

Copper 10/100 Passive TAP System

Network Critical TAPs provide security managers with a safe and secure way to deploy network IDS sensors into full-duplex links. The Critical TAP System is a flexible range of durable and highly reliable network TAPs dedicated to leveraging nIDS sensor deployment across the whole LAN.

The Copper 10/100 Passive TAP System is specifically designed for deployment into high utilization core network segments where 100% coverage by the sensor is required. Two mono-directional monitor ports guarantee that all traffic is sent to the IDS, giving the sensor 100% visibility while protecting the live network and securing the sensor from potential attack.

The TAPs also feature Network Critical's unique permanent link technology which ensures that the live network remains uninterrupted even during a power failure. The TAPs are available as a single unit for 1 segment, which can be rack mounted, or as multiple units for up to 20 segments, with separate TAPs within the same rack mount chassis.

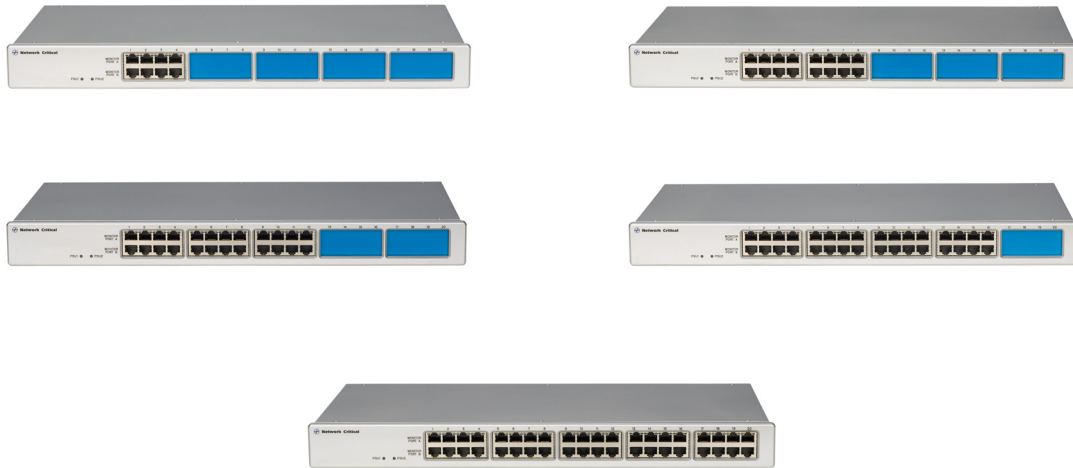


KEY FEATURES

- Link Failure Propagation (LFP)- Allows attached network devices to detect if link state is lost on adjacent network devices
- LinkLock Mode- Creates a permanent physical connection between live network ports
- Guaranteed 100% live link uptime even on power loss
- RX & TX on separate monitor ports- 100% traffic passed to IDS
- High durability internal power source
- Solid construction quality- built to last
- High port density: 1, 2, 3, 4, 8, 12, 16, or 20 TAPs in 1U space
- 100% passive- no latency on live network
- For high utilization LAN segments
- Highly reliable - MTBF >500,000 hours
- Live network ports on rear prevent accidental disconnection
- Used and approved by major IDS solution vendors

Copper 10/100 Passive TAP System

The Copper 10/100 Passive TAP System is available as a portable tap, single unit for one segment, which can be rack mounted, or as multiple units with either 4, 8, 12, 16, or 20 separate TAPs within a single 19" 1U rack mount chassis



ORDER INFORMATION

NCT301-POE-AC:	CriticalTAP 1x1: 10/100MB Passive Portable Breakout TAP
NCT304-AC:	CriticalTAP 4x4: 10/100 Passive, 1U Chassis w/ Single AC Power Supply
NCT304-DC:	CriticalTAP 4x4: 10/100 Passive, 1U Chassis w/ Single DC Power Supply
NCT308-AC:	CriticalTAP 8x8: 10/100 Passive, 1U Chassis w/ Single AC Power Supply
NCT308-DC:	CriticalTAP 8x8: 10/100 Passive, 1U Chassis w/ Single DC Power Supply
NCT312-AC:	CriticalTAP 12x12: 10/100 Passive, 1U Chassis w/ Single AC Power Supply
NCT312-DC:	CriticalTAP 12x12: 10/100 Passive, 1U Chassis w/ Single DC Power Supply
NCT316-AC:	CriticalTAP 16x16: 10/100 Pasive, 1U Chassis w/ Single AC Power Supply
NCT316-DC:	CriticalTAP 16x16: 10/100 Passive, 1U Chassis w/ Single DC Power Supply
NCT320-AC:	CriticalTAP 20x20: 10/100 Passive, 1U Chassis w/ Single AC Power Supply
NCT320-DC:	CriticalTAP 20x20: 10/100 Passive, 1U Chassis w/ Single DC Power Supply

TECHNICAL SPECIFICATIONS

# of TAPs:	1, 4, 8, 12, 16, 20
Size dimensions (W x H x D)	17.33 in x 1.73 in x 12.44 in 44.05 cm x 4.4 cm x 31.63 cm
Weight:	7.0 lbs 3.2 kg
Ambient Temperature:	+32° F to +104° F 0° C to +40° C
Operating Relative Humidity	90% non-condensing
Storage Temperature:	-4° F to +158° F/ -20° C to +70° C
Voltage (AC/DC):	85V – 264V AC/ 7V – 60V DC
Current (nominal):	.22A @230 VAC/ 0.44A @ 110 VAC/ 1.5A @ 50 VDC
Maximum Power Consumption:	50 Watts
Mean Time Between Failures (MTBF):	465,000+ hours

EUROPEAN HEADQUARTERS:

Network Critical Ltd
East Throp House, 1 Paddock Road,
Reading, Berkshire, RG4 5BY
tel: +44 (0) 118 954 3210



AMERICAS OFFICE:

Network Critical NA LLC
37 Franklin Street, Suite 100
Buffalo, NY 14202
tel: +1-716-558-7280
fax: +1-716-568-8280